

# RFC Editor Report

IETF 93  
Prague, Czech Republic

# RFC Editor at IETF 93

## Office Hours

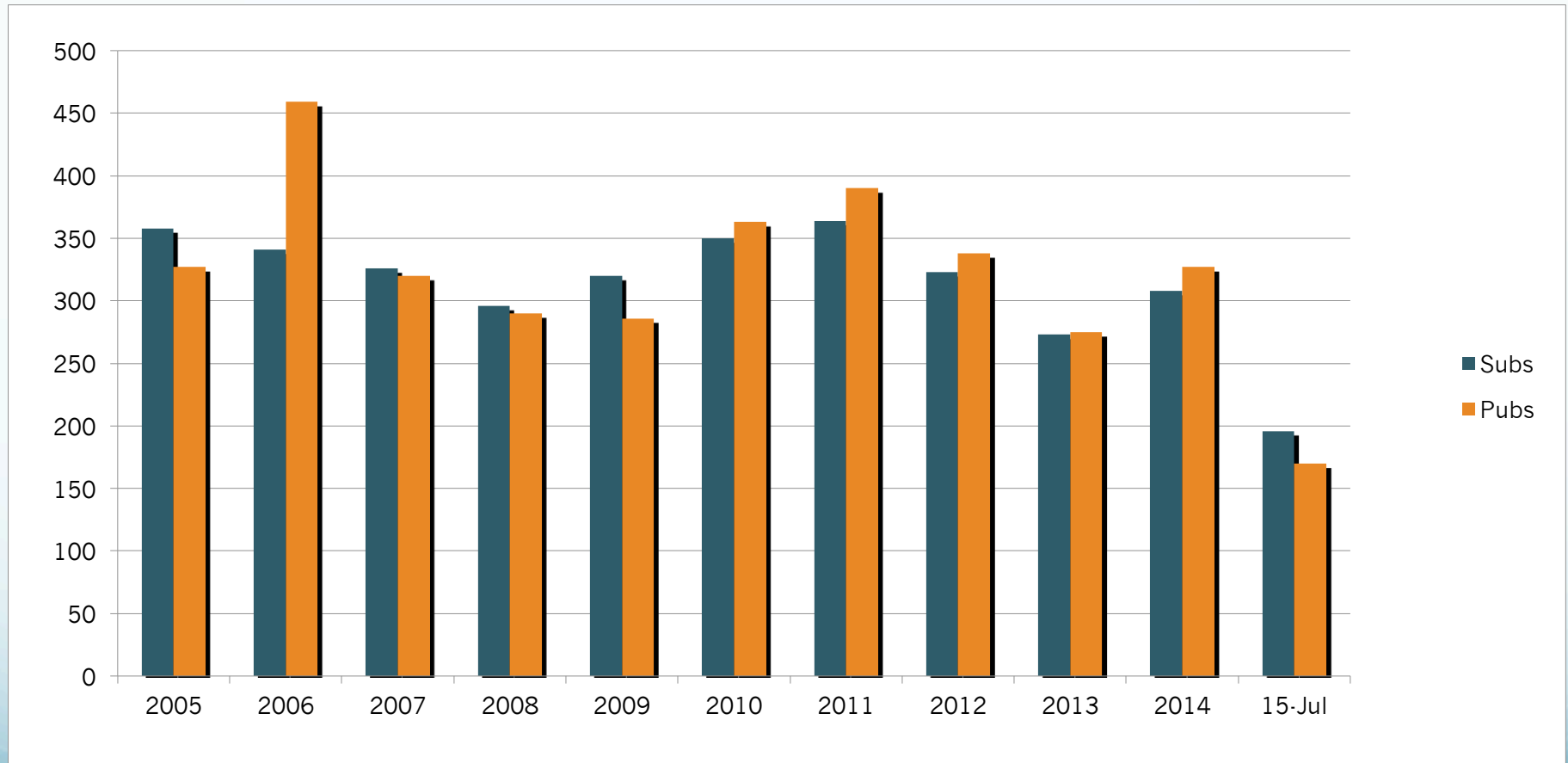
RPC: Mon – Thu

RSE: Mon & Tue

ISE: Mon & Tue

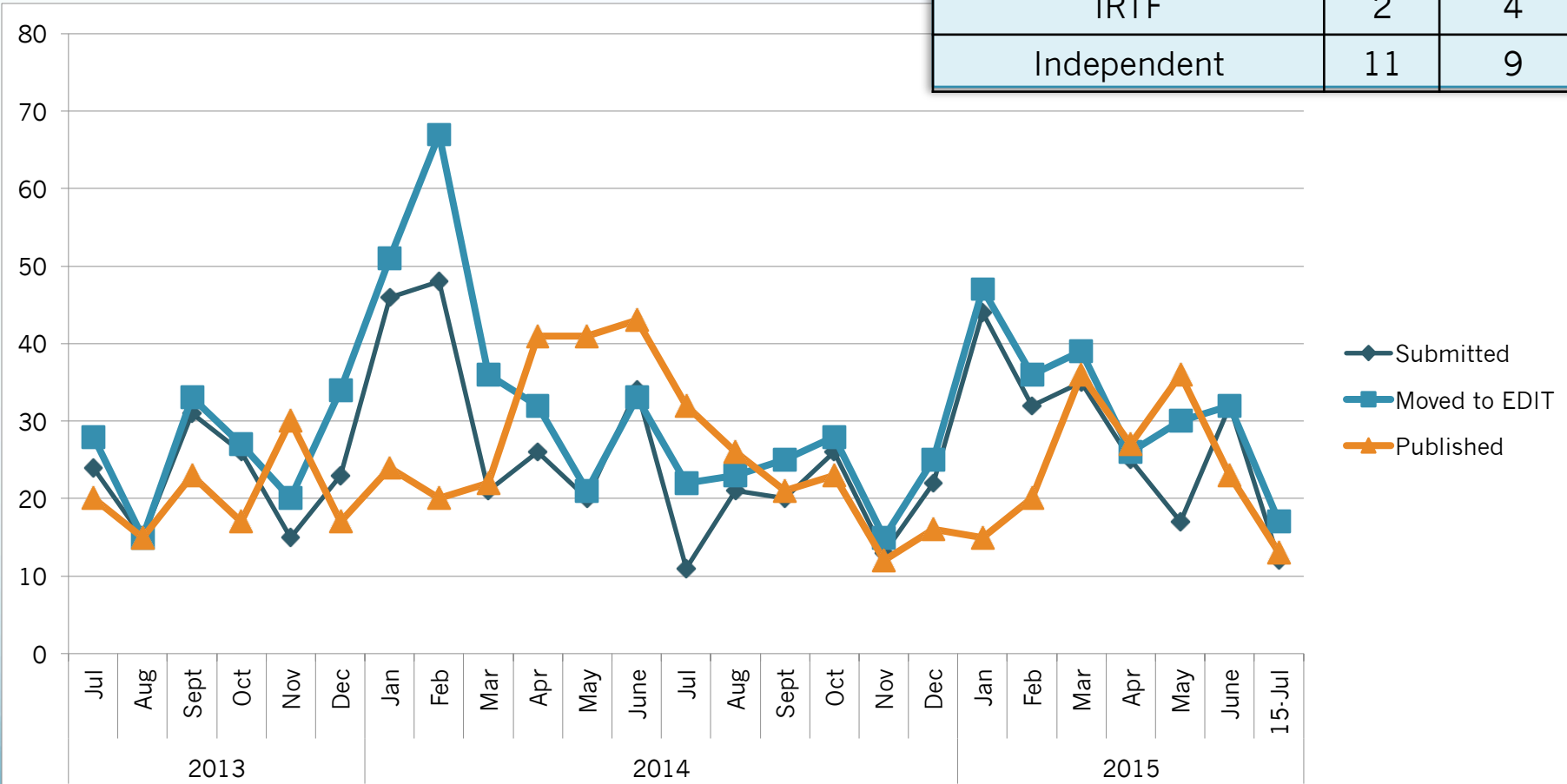
<http://www.rfc-editor.org/ietf.html>

# Annual Subs & Pubs



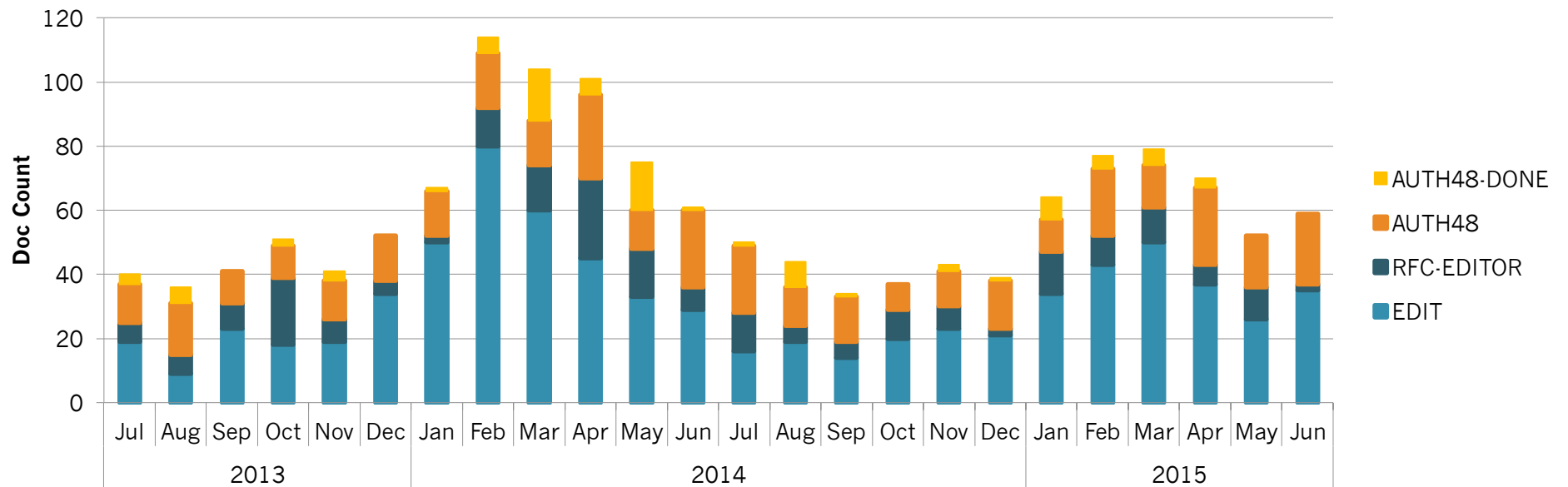
# Monthly Queue

|                    |             |             |
|--------------------|-------------|-------------|
| Mar – Jul 15, 2015 | Subs<br>120 | Pubs<br>135 |
| IETF WG            | 98          | 108         |
| IETF non-wg        | 8           | 12          |
| IAB                | 1           | 2           |
| IRTF               | 2           | 4           |
| Independent        | 11          | 9           |



# Queue Movement

## # of Docs in Primary Processing States



# RPC Processing Times

|                                       | 2014 |     |     |     |     |     | 2015 |     |     |     |     |     | 12mo Avg   |
|---------------------------------------|------|-----|-----|-----|-----|-----|------|-----|-----|-----|-----|-----|------------|
|                                       | Jul  | Aug | Sep | Oct | Nov | Dec | Jan  | Feb | Mar | Apr | May | Jun |            |
| Met SLA Target<br>(67% RET or better) | ✗    | ✓   | ✗   | ✓   | ✓   | ✓   | ✓    | ✗   | ✗   | ✓   | ✗   | ✗   | <b>50%</b> |
| % of docs<br>pub <= 6 wks             | 46%  | 77% | 52% | 74% | 92% | 69% | 73%  | 60% | 50% | 81% | 19% | 43% | <b>61%</b> |
| # of docs<br>pub <=6 wks              | 13   | 20  | 13  | 17  | 11  | 11  | 11   | 12  | 18  | 22  | 7   | 10  | <b>14</b>  |
| total # of docs pub                   | 32   | 26  | 25  | 23  | 12  | 16  | 15   | 20  | 36  | 27  | 36  | 23  | <b>24</b>  |
| total # of docs sub                   | 11   | 21  | 20  | 26  | 13  | 22  | 44   | 32  | 35  | 25  | 17  | 32  | <b>25</b>  |
| total # of docs<br>entering EDIT      | 22   | 23  | 21  | 28  | 15  | 25  | 47   | 36  | 39  | 26  | 30  | 32  | <b>29</b>  |
| 67th percentile (wks)                 | 8.2  | 5.9 | 7.4 | 5.8 | 5.2 | 6   | 5.9  | 6.3 | 7.4 | 6   | 9.2 | 7.5 | <b>6.7</b> |

SLA: 67% of published docs have an RFC Editor time of 30 work days or less  
 RFC Editor time: RPC-controlled states (i.e., does not include 3<sup>rd</sup> party states)

# What's New

- Transitioned from @tools.ietf.org to @ietf.org (notification messages)
- Made updates for handling the ART area
- DOIs
  - Assigned to already existing RFCs
  - Assigned to new RFCs upon publication
  - Reference libraries updated as a result of DOI addition
  - Working with Tony Hansen to xml2rfc.ietf.org library updated

# RSE Update

## Digital Object Identifiers (DOIs)

- Project is complete; DOIs have been assigned to all published RFCs and is now part of the automated workflow for new RFCs

## Google Scholar

- Project is complete; RFCs are now being properly indexed by Google Scholar

## Digital Preservation

- Working to find partners to archive RFCs according to information science best practice
- See <draft-iab-rfc-preservation> for a description of the work area

## RFC Editor website

- Website is being moved to a WordPress platform; work expected to complete in September 2015



# Format update

- Discussing the process by which to move the drafts associated with this project forward
- SoWs and drafts are undergoing further review within the Tools Development team
- Pointers to the most recent versions of drafts associated with this work available through the FAQ: <http://www.rfc-editor.org/rse/FormatFAQ.html>